

Standun Body Maker Solutions

Hold-Down Bearing Upgrades – B3 and B5 Body Makers



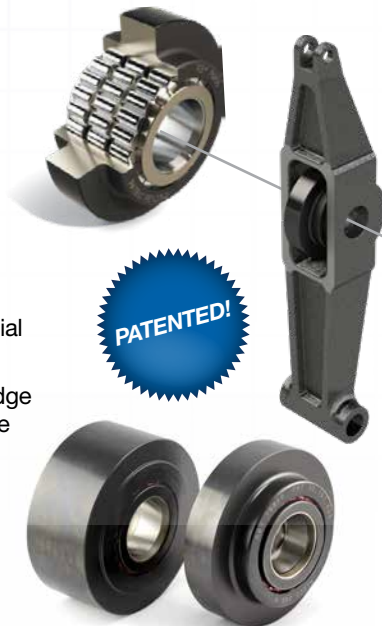
From the cupping presses to the palletizers, RBC Bearings continues to provide solutions to the canning industry's greatest problems.

Hold-down lever bearings have been the pain point for the front end teams for years. With troublesome assembly and installation of the cam follower and frequent replacement of very expensive shafts, an RBC solution for the job was needed! RBC wanted to tackle these issues and simplify installation, while optimizing the bearings internal geometry for maximum performance and load distribution. With significant reductions in energy consumption reported over bronze bushings, our RBY76850 also reduces tear off rates and extends the life of the cam. Available in narrow and full width configurations, the RBC hold-down bearing can be installed with minor lubrication adjustments to your machine. Time to kick up your feet and enjoy a part that is finally easy to assemble!

RBY76850 (Narrow Width)
RBY77062 (Full Width)

Features, Benefits & Results

- Simplified machine assembly due to a unitized bearing design
- No more shaft wear due to the integral bearing inner raceway
- Lower mass outer raceway reduces inertial forces, increasing bearing and cam life
- The three roller path design eliminates edge loading, extending the maintenance cycle
- 8X improvement in bearing life reported
- 2X reduction on tear off rates reported (.40 cans to .20 cans)



Connecting Rod Upgrades

No more fishing for dropped spacers in the your oil bath!

Features, Benefits & Results

- Eliminates outboard spacers required with standard bearing
- Simplified installation and removal

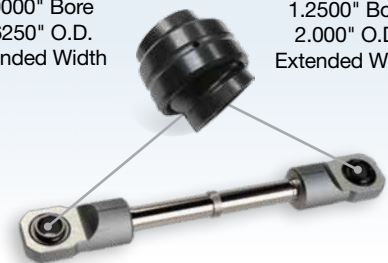
B16EL35

1.0000" Bore
 1.6250" O.D.
 Extended Width

or

B20EL25

1.2500" Bore
 2.000" O.D.
 Extended Width



Smoother. Faster. Longer.
Because That's How We Roll.

RBC Bearings® has been producing bearings in the USA since 1919. In addition to unique custom bearings, RBC Bearings® offers a full line of industrial parts for the canning industry, including:



The RBC “Triple Threat” of Necker Cam Follower Solutions! Which is right for your plant?

- The time-tested CRBC1-5/8 14 Long Life RBC Roller® Follower
- The proven Maintenance Free, BCF1-5/8 14 CT Ball Bearing Follower w/polymer outer
- ***NEW***The Maintenance Free, BCF1-5/8 14 ST Ball Bearing Follower w/steel outer

Contact us to determine the best product for your particular operating conditions. RBC is providing engineered solutions to increase reliability for our canning industry customers!



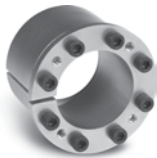
The RBC unitized bearing solution for Standun B3 and B5 Body Makers simplifies installation and increases the hold down lever bearing life. No more loose rollers! Other features and benefits include:

- Addition of an inner ring - virtually no shaft wear - no more shaft replacements
- 3 roller paths – better load distribution - resistance to moment loads – no skewing or skidding damage
- Larger roller pitch circle – more rollers per path - lower outer ring mass - reduced inertial loads

This design is available with narrow or wide-width cam follower outers. Thrust washers included! Contact us to discuss the reduced maintenance costs and improved can quality possible!



RBC Maintenance Free Solutions for Trimmers eliminates the need for relubrication and protects the cam from wear. New, improved sealing prevents coolant and washdown fluids from damaging the bearings. RBC Maintenance Free Ball Bearing Followers BCF1-1/2 10 CT and BCF1-3/4 10 CT are upgrades for OEM C20043 (McGill® CCF11/2SB) and C20044 (McGill® CCF13/4SB).



Climax Metal Products offers a keyless locking assembly that directly replaces the single nut bushing used to mount gears in the driveline of the necker. The screws on the Climax C192 Series KLD are easily tightened with a standard torque of 150 in-lbs. Compare this with the massive wrench and 409 ft-lbs. of torque required to tighten the single nut bushing supplied by the OEM and you will immediately understand the improved safety and ease-of-use this locking device provides to can makers.

Specialty Cam Followers and Bearings for Canmakers:



Necker Cam Followers for Can Neckers

RBC Roller® Cam Followers with two rows of cylindrical rollers offer superior life to Needle Roller Cam Followers.



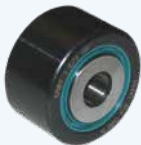
Spindle Disk Cam Followers for Rutherford Can Decorators

Precision Dual-Race, Roller Cam Followers for improved life.



Special Bearings for Ragsdale Body Makers

Special Combination Roller and Spherical Plain Bearings and Cam Followers for Ragsdale Body Makers.



Necker Yoke Rollers for ANC Can Neckers

RBC Roller® Yoke Rollers with two rows of cylindrical rollers offer superior life to Standard Needle Roller Yoke Rollers.



Spindle Disk Cam Followers for Concord Can Decorators

Precision Dual-Race, Roller Cam Followers for improved life. Available in versions for rotary and interposer trip systems.



Special Connecting Rod Bearings for Standun Body Makers

Special Spherical Plain Bearings with extended inner rings eliminate the need for spacers and simplify installation and removal.

Concord, Ragsdale, Rutherford, and Standun are brands of Stolle Machinery. McGill® is a registered trademark of Emerson Power Transmission. Belvac is a part of the Dover Company and Belvac® is a registered trademark of the Belvac Production Machinery, Inc.