

Metric Product Line

Due to the increased demand for metric rod end and spherical bearings, Heim Bearings has significantly expanded the product line to meet your needs.

In addition to establishing standard pricing on the four most popular rod end series, Heim has established a stocking program on the most widely used sizes. As a result, the following four metric rod end series have been added to the Heim Authorized Distributor Price List:

<u>Series</u>	<u>Description</u>
SM/SF	Precision Rod Ends - Four Piece Construction
SM 40/SF 40	High Performance Precision Rod Ends - Four Piece Construction
SM 45/SF 45	Stainless Steel Precision Rod Ends - Four Piece Construction
SME 45/SFE 45	Stainless Steel Precision Self-Lubricating Rod Ends

To satisfy all of your metric needs, there is also a wide range of additional rod end and spherical bearing products available. The following series are readily available with inventory maintained on the most popular items:

<u>Series</u>	<u>Description</u>
SM 20/SF 20	Precision Rod Ends - Four Piece Construction (Alternative Threads)
SM 50/SF 50	High Performance Precision Rod Ends - Four Piece Construction (High Stress)
SME/SFE	Precision Self-Lubricating Rod Ends
SME 40/SFE 40	High Performance Self-Lubricating Rod Ends
SS	Precision Sphericals - Four Piece Construction
SSA	Precision Sphericals - Metal-to-Metal
SSA 50	High Performance Precision Sphericals - Metal-to-Metal
SSE	Precision Self-Lubricating Sphericals
SSE 45	Stainless Steel Precision Self-Lubricating Sphericals
SSE 50	Stainless Steel High Performance Self-Lubricating Sphericals

These rod ends and spherical bearings have been manufactured in an RBC ISO 9001:2000 certified plant to the following standards:

- DIN 648K
- ISO 6126 JK

To ensure ease of fitting and replacement, the bearing bore of rod end and spherical bearings conform to an H7 tolerance, and the outside diameter of spherical bearings to an h6 tolerance.

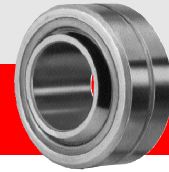
As with the existing Heim product line, metric bearings can also be customized to your specifications:

- Special boundary dimensions
- Alternative materials
- Factory lubrication options
- Neoprene protective covers for rod ends



Heim Bearings
ISO 9001:2000
AS 9100

www.rbcbearings.com
800.356.6584



Metric Quick Reference Guide

SM/SF Series

Precision Rod Ends - Four Piece Construction

Outer Member	Carbon steel with corrosion resistant zinc plating
Ball	Carbon steel (chrome plated through 20mm bore size), heat treated
Race	Bronze inserts

- 1) Add letter "L" to prefix to indicate left handed thread (ex. SML8).
- 2) The letter G indicates lubricator (ex. SMG8) and comes standard on sizes 8 and larger.
- 3) Available in 2mm through 30mm bore sizes.
- 4) Consult factory for the following options:
 - Reduced play
 - Magnetic particle inspected

SM 40/SF 40 Series

High Performance Rod Ends - Four Piece Construction

Outer Member	Alloy steel with corrosion resistant zinc plating, heat treated
Ball	Carbon steel (chrome plated through 20mm bore size), heat treated
Race	High strength bronze inserts

- 1) Add letter "L" to prefix to indicate left handed thread (ex. SML840).
- 2) The letter G indicates lubricator (ex. SMG840) and comes standard on sizes 8 and larger.
- 3) Available in 5mm through 30mm bore sizes.
- 4) Consult factory for the following options:
 - Reduced play
 - Magnetic particle inspected
 - Hard chrome plated ball

SM 45/SF 45 Series

Stainless Steel Precision Rod Ends - Four Piece Construction

Outer Member	AISI 303 stainless steel
Ball	AISI 420 stainless steel, heat treated
Race	High strength bronze inserts

- 1) Add letter "L" to prefix to indicate left handed thread (ex. SML845).
- 2) The letter G indicates lubricator (ex. SMG845) and comes standard on sizes 8 and larger.
- 3) Available in 3mm through 30mm bore sizes.
- 4) Consult factory for the following options:
 - Reduced play
 - Hard chrome plated ball
 - Other grades of stainless steel

SME 45/SFE 45 Series

Stainless Steel Precision Self-Lubricating Rod Ends

Outer Member	AISI 303 stainless steel
Ball	AISI 420 stainless steel, heat treated
Race	AISI 303 stainless steel, Uniflon® E liner

- 1) Add letter "L" to prefix to indicate left handed thread (ex. SMLE845).
- 2) Available in 3mm through 30mm bore sizes.
- 3) Consult factory for the following options:
 - Special sliding moment
 - Hard chrome plated ball
 - Other grades of stainless steel



Heim Bearings
ISO 9001:2000
AS 9100

www.rbcbearings.com
800.356.6584