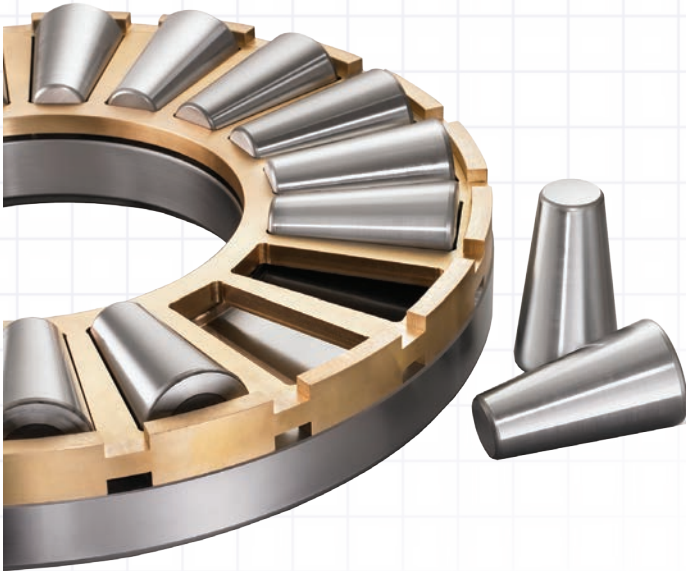


Productivity Solutions for Plastics Extruders

RBC Tapered Roller Thrust Bearings using MAX3™ clean steel results in higher capacities and fatigue life in Plastics Extruders. Combined with RBC's inventory availability and best in class customer service, RBC's Tapered Roller Thrust Bearings increase uptime and reduces total cost.



RBC produces an extensive heavy duty Tapered Roller Thrust Bearing product line from 4 inch bore to 16 inch bore. RBC heavy duty Tapered Roller Thrust Bearings are designed for demanding applications in harsh environments, such as Plastics Extruders.

RBC Tapered Roller Thrust Bearings are available with machined bronze cages, pin-type cages, and as full complement bearings, offering significantly increased capacity for heavily loaded applications.



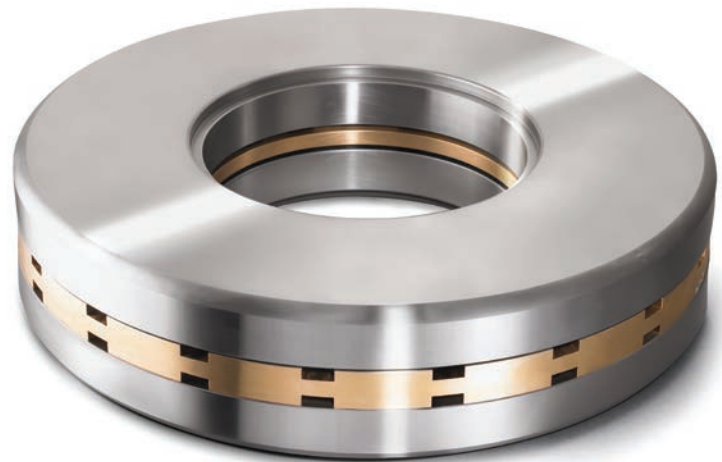
Advantages of RBC heavy duty Tapered Roller Thrust Bearings:

- ✓ Interchangeable with industry standard product offering
- ✓ High shock load resistance
- ✓ Application flexibility — Bore reliefs standard on larger sizes, optional on smaller sizes, to fit a variety of unique applications
- ✓ Best lead times in the industry

RBC Tapered Roller Thrust Bearings are available with high quality MAX3™ clean steel resulting in:

- ✓ Longer Fatigue Life / Increased Capacity
- ✓ Improved Power Density

RBC carries standard Tapered Roller Thrust Bearings as well as V-Flats to support a variety of the most demanding applications.



Smoother. Faster. Longer.
Because That's How We Roll.



Innovation. Commitment. Quality.

RBC has been producing bearings in the USA since 1919. In addition to unique custom bearings, RBC offers a full line of standard industrial and aerospace bearings, including:



Tapered Roller Thrust Bearings

Case-hardened tapered roller thrust bearings for oilfield top drives and swivels. Available in full complement, maximum capacity versions.



Thin Section Ball Bearings

Standard cross sections to one inch. Bore sizes to 40 inches. Stainless steel and other materials are available. Seals are available on all sizes and standard cross sections. Super duplex configurations.



Cam Followers

Standard stud, heavy stud, yoke type, caged roller followers. Patented **RBC Roller**® cylindrical roller cam followers, **HexLube**® universal cam followers, airframe track rollers.



Cylindrical Roller Bearings

Cylindrical roller bearings designed for mud pump pinion and eccentric positions. Fully interchangeable to industry standards.



Needle Roller Bearings

Pitchline® caged heavy duty needle roller bearings ideal for cross head bearings applications. These double row bearings are available in single row and **Tandem Roller**® versions.



Commercial Rod Ends

Commercial and industrial, precision, Mil-Spec series, self-lubricating, and aircraft. Sold under the **Heim**®, **Unibal**®, and **Spherco**® names. Available in inch and metric sizes.



Spherical Plain Bearings

Radial, angular contact, extended inner ring, high misalignment. **QuadLube**®, **ImpactTuff**®, **SpreadLock**® Seal, **CrossLube**®, **Duralube**™, and self-lubricating bearings. Available in inch and metric sizes.



Tapered Roller Bearings

Single, double, & multi row versions available for main bearing positions in mud pumps, gear boxes, etc. Bearings are constructed of case hardened steel washers and rollers with bore size of 11" or greater.



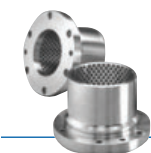
TP Series Bearings

RBC's TP Series cylindrical roller thrust bearings ideal for crane hooks, oil well swivels, winch systems, and gear boxes. Fully interchangeable with industry standard offering.



Keyless Locking Devices

Mechanical bushings used to connect power transmission components onto rotating shafts. Without the use of keyways, KLDs eliminate the problems associated with backlash including fretting, corroding, and wallowing.



Lubron™ Bearings

Lubron™ self-lubricating bearings designed and custom manufactured in most any size, material and bearing configuration. Applications include hydro power and water control, nuclear power generation, infrastructure, architecture, offshore marine, industrial, machinery and heavy equipment.



Shaft Collars

Used to position or locate a component on a shaft. Made from mild steel, type 303 or 316 stainless steel, aluminum, or acetal. Available in inch and metric sizes.



Self-Lubricating Bearings

Radial, thrust, rod ends, spherical bearings, high temperature, high loads. Available in inch and metric sizes. **Fiberglide**® self-lubricating bearings.



Specials

RBC manufactures many specialty bearings for the aerospace, oil and energy, semiconductor equipment, packaging, transportation, and other industries.



Ball Bearings

Precision ground, semiground, unground. High loads, long life, smooth operation. **Nice**® branded products are offered in caged and full complement configurations.



Rigid Couplings

Shaft couplings serve as components to time, join, or align shafts at lower speeds and torque, especially when zero backlash is desired. Made from mild steel with a black oxide finish type 303 stainless steel, or aluminum. Available in inch and metric sizes.



PIC Design®

Complete line of precision gears, precision hardware, timing belts, pulleys, and linear motion systems. Industries served include industrial, aerospace, defense, medical, robotics and automation, material handling, and assembly. Custom design support for unique applications.



Smoother. Faster. Longer. Because That's How We Roll.

www.rbcbearings.com

800.356.6584

This document contains a general overview of the products and features described herein. It is solely for informational purposes, does not represent a warranty of the information contained herein, and is not to be construed as an offer to sell or a solicitation to buy. Contact RBC Bearings for detailed information suitable to your specific applications. RBC Bearings reserves the right to modify its products and related product information at any time without prior notice. Some of the products listed herein may be covered by one or more issued and pending U.S. or foreign patents. Contact RBC Bearings for product specific information.

© 2006-2015 RBC Bearings Incorporated. All rights reserved.

RBC 9/15