

## Metric Product Line

Due to the increased demand for metric rod end and spherical bearings, Heim® Bearings has significantly expanded the product line to meet your needs.

In addition to establishing standard pricing on the four most popular rod end series, Heim® Bearings has established a stocking program on the most widely used sizes. As a result, the following four metric rod end series have been added to the Heim® Bearings Authorized Distributor Price List:

| <u>Series</u> | <u>Description</u>  |
|---------------|---|
| SM/SF         | Precision Rod Ends - Four-Piece Construction                  |
| SM 40/SF 40   | High Performance Precision Rod Ends - Four-Piece Construction |
| SM 45/SF 45   | Stainless Steel Precision Rod Ends - Four-Piece Construction  |
| SME 45/SFE 45 | Stainless Steel Precision Self-Lubricating Rod Ends           |

To satisfy all of your metric needs, there is also a wide range of additional rod end and spherical bearing products available. The following series are readily available with inventory maintained on the most popular items:

| <u>Series</u> | <u>Description</u>  |
|---------------|---|
| SM 20/SF 20   | Precision Rod Ends - Four-Piece Construction (Alternative Threads)          |
| SM 50/SF 50   | High Performance Precision Rod Ends - Four-Piece Construction (High Stress) |
| SME/SFE       | Precision Self-Lubricating Rod Ends   |
| SME 40/SFE 40 | High Performance Self-Lubricating Rod Ends                                  |
| SS            | Precision Sphericals - Four-Piece Construction                              |
| SSA           | Precision Sphericals - Metal-to-Metal                                       |
| SSA 50        | High Performance Precision Sphericals - Metal-to-Metal                      |
| SSE           | Precision Self-Lubricating Sphericals                                       |
| SSE 45        | Stainless Steel Precision Self-Lubricating Sphericals                       |
| SSE 50        | Stainless Steel High Performance Self-Lubricating Sphericals                |

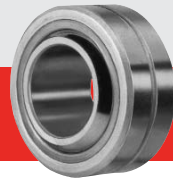
These rod ends and spherical bearings have been manufactured in an RBC ISO 9001:2000 certified plant to the following standards:

- DIN 648K
- ISO 6126 JK

To ensure ease of fitting and replacement, the bearing bore of rod end and spherical bearings conform to an H7 tolerance, and the outside diameter of spherical bearings to an h6 tolerance.

As with the existing Heim® Bearings product line, metric bearings can also be customized to your specifications:

- Special boundary dimensions
- Alternative materials
- Factory lubrication options
- Neoprene protective covers for rod ends



# Metric Quick Reference Guide

## **SM/SF Series**

## **Precision Rod Ends - Four-Piece Construction**

|              |   |
|--------------|---|
| Outer Member | Carbon steel with corrosion resistant zinc plating                |
| Ball         | Carbon steel (chrome plated through 20mm bore size), heat treated |
| Race         | Bronze inserts  |

- 1) Add letter "L" to prefix to indicate left handed thread (ex. SML8)
- 2) The letter "G" indicates lubricator (ex. SMG8) and comes standard on sizes 8 and larger
- 3) Available in 2mm through 30mm bore sizes
- 4) Consult factory for the following options:
  - Reduced play
  - Magnetic particle inspected

## **SM 40/SF 40 Series**

## **High Performance Rod Ends - Four-Piece Construction**

|              |   |
|--------------|---|
| Outer Member | Alloy steel with corrosion resistant zinc plating, heat treated   |
| Ball         | Carbon steel (chrome plated through 20mm bore size), heat treated |
| Race         | High strength bronze inserts                                      |

- 1) Add letter "L" to prefix to indicate left handed thread (ex. SML840)
- 2) The letter "G" indicates lubricator (ex. SMG840) and comes standard on sizes 8 and larger
- 3) Available in 5mm through 30mm bore sizes
- 4) Consult factory for the following options:
  - Reduced play
  - Magnetic particle inspected
  - Hard chrome plated ball

## **SM 45/SF 45 Series**

## **Stainless Steel Precision Rod Ends - Four-Piece Construction**

|              |  |
|--------------|--|
| Outer Member | AISI 303 stainless steel               |
| Ball         | AISI 420 stainless steel, heat treated |
| Race         | High strength bronze inserts           |

- 1) Add letter "L" to prefix to indicate left handed thread (ex. SML845)
- 2) The letter "G" indicates lubricator (ex. SMG845) and comes standard on sizes 8 and larger
- 3) Available in 3mm through 30mm bore sizes
- 4) Consult factory for the following options:
  - Reduced play
  - Hard chrome plated ball
  - Other grades of stainless steel

## **SME 45/SFE 45 Series**

## **Stainless Steel Precision Self-Lubricating Rod Ends**

|              |  |
|--------------|--|
| Outer Member | AISI 303 stainless steel                   |
| Ball         | AISI 420 stainless steel, heat treated     |
| Race         | AISI 303 stainless steel, Uniflon® E liner |

- 1) Add letter "L" to prefix to indicate left handed thread (ex. SMLE845)
- 2) Available in 3mm through 30mm bore sizes
- 3) Consult factory for the following options:
  - Special sliding moment
  - Hard chrome plated ball
  - Other grades of stainless steel

This document contains a general overview of the products and features described herein. It is solely for informational purposes, does not represent a warranty of the information contained herein, and is not to be construed as an offer to sell or a solicitation to buy. Contact RBC Bearings Incorporated for detailed information suitable to your specific applications. RBC Bearings Incorporated reserves the right to modify its products and related product information at any time without prior notice.

Some of the products listed herein may be covered by one or more issued and pending U.S. or foreign patents. Contact RBC Bearings for product specific information.

© 2004, 2007 RBC Bearings Incorporated

RBC 10/07



Heim® Bearings  
ISO 9001:2000  
AS9100

[www.rbcbearings.com](http://www.rbcbearings.com)  
800.356.6584