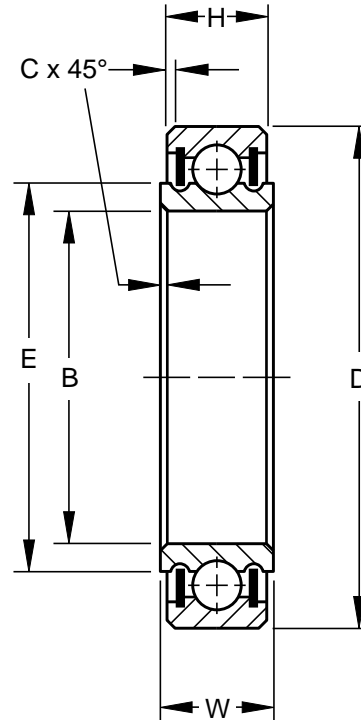


AIRFRAME CONTROL BALL BEARINGS — MB500D PRECISION SERIES TORQUE TUBE



MS21428 • SAE-AS7949

- Extra light duty
- Single row, ball, torque tube type
- PTFE seals
- Exposed surfaces except bore and seals are cadmium plated
- Prelubricated for life
- This series is dimensionally interchangeable with the unsealed MB500 series
- Also offered with CRES 440C material and/or zinc nickel plating per OEM specifications



AIRFRAME CONTROL BALL BEARINGS

SPECIFICATIONS AND ORDERING INFORMATION

TO ORDER, SPECIFY BEARING NUMBER AND FACTORY SPECIFICATION. SEE TABLE 1 ON PG 8. (Example MB538DD FS464)

Bearing Number 52100†	MS 21428 Dash No.	Bore B		Outside Diameter D		Widths				E	C		Wt.		Radial Limit Load Rating	Thrust Limit Load Rating			
		+0.0000, -0.0005 +0.000, -0.013		+0.0000, -0.0005 +0.000, -0.013		+0.0000, -0.0025 +0.000, -0.064		+0.000, -0.005 +0.00, -0.13			Approx.	+0.015-0.000 +0.38-0.00		Approx.					
		in.	mm	in.	mm	in.	mm	in.	mm			in.	mm	lbs.			kg	lbf.	N
MB538DD	-38	0.6250	15.875	1.0625	26.988	0.2810	7.140	0.250	6.35	0.781	19.84	0.015	0.38	0.03	0.014	3280	14600	1500	6700
MB539DD	-39	0.7500	19.050	1.1875	30.163	0.2810	7.140	0.250	6.35	0.898	22.81	0.015	0.38	0.04	0.018	3750	16700	1700	7600
MB540DD	-40	0.8750	22.225	1.3125	33.338	0.2810	7.140	0.250	6.35	1.019	25.88	0.015	0.38	0.05	0.023	4220	18800	1900	8500
MB541DD	-41	1.0625	26.988	1.5000	38.100	0.2810	7.140	0.250	6.35	1.219	30.96	0.015	0.38	0.06	0.027	5000	22300	2200	9800
MB542DD	-42	1.3125	33.338	1.7500	44.450	0.2810	7.140	0.250	6.35	1.454	36.93	0.015	0.38	0.09	0.041	5950	26500	2700	12000
MB543DD	-43	1.5625	39.688	2.0000	50.800	0.2810	7.140	0.250	6.35	1.706	43.33	0.015	0.38	0.1	0.045	6880	30600	3200	14300
MB544DD	-44	1.8125 ⁽¹⁾	46.038 ⁽¹⁾	2.2500 ⁽²⁾	57.150 ⁽²⁾	0.2810	7.140	0.250	6.35	1.974	50.14	0.015	0.38	0.11	0.05	7980	35500	3600	16000
MB545DD	-45	2.0625 ⁽¹⁾	52.388 ⁽¹⁾	2.6250 ⁽²⁾	66.675 ⁽²⁾	0.2810	7.140	0.250	6.35	2.291	58.19	0.015	0.38	0.15	0.068	9220	41000	4000	17800
MB546DD	-46	2.3125 ⁽¹⁾	58.738 ⁽¹⁾	2.8750 ⁽²⁾	73.025 ⁽²⁾	0.2810	7.140	0.250	6.35	2.531	64.29	0.015	0.38	0.17	0.077	10150	45200	4400	19600

(1) +.0000 in. (+.000mm), -.0008 in. (-.020mm).

(2) +.0000 in. (+.000mm), -.0007 in. (-.018mm).

*Check for availability.

†For CRES 440C material prefix "A" in part number; e.g., AMB538DD